

ICPI TECH SPEC

INTERLOCKING CONCRETE PAVEMENT INSTITUTE[®]

NUMBER • 8

CONCRETE GRID PAVEMENTS

Background

As cities grow, man-made surfaces contribute to urban heat and stormwater runoff. Heat is generated by the high concentration of pavements and buildings. It forms a dome of warm air, or an urban heat island, over cities that can be as much as 12° F (7°C) higher than outlying areas. The urban heat island also increases electricity consumption for air conditioning. This dome of heat traps dust and gases, increasing the concentrations of air pollution from automobile exhaust and industrial sources (1).

A high concentration of pavements and buildings, or impervious surfaces, generates additional runoff during rainstorms. Washed from the air and pavements, excess runoff carries pollutants that enter water courses. The runoff generated by impervious surfaces erodes streams, degenerating riparian environments, and pollutes sources of drinking water. Increased runoff volumes and velocities deprive ground water from recharging, decreasing the amount of available water in many communities.

Concrete grid pavements or “green parking lots” originated from the need to reduce the urban heat island and stormwater runoff from impervious surfaces. Perforated concrete units as pavement were introduced when hollow concrete building blocks

were placed in the ground to support cars. They first appeared in 1961 to handle overflow parking at a major cultural center near Stuttgart, Germany (2). They were a replacement for temporary steel runway matting. Figure 1 shows the genesis of grids.

Since then, concrete grids developed in Europe were applied in North America as a method for reducing lakeside and streambank erosion, as well as for ditch liners. Concrete grids were later used for driveways, main and overflow parking areas, shoulders along airfields and highways crossovers on medians, boat launching ramps, emergency fire lanes and for access roads adjacent to buildings. See Figure 2. Figures 3-13 illustrate many uses of concrete grid pavers. This technical bulletin provides guidance on the design, specification, construction, and maintenance of concrete grid pavements for a wide range of applications. Concrete grids are an environmentally friendly technology that can help earn credits under green building rating systems such as LEED[®] and Green Globes. For more information on how grids can earn credits see *ICPI Tech Spec 16 – Achieving LEED[®] Credits with Segmental Concrete Pavement*.

Perforated concrete paving units as pavement were introduced as hollow concrete building blocks placed in the ground to support cars.



Figure 1. Grids first used in Germany in 1961 for overflow parking were building blocks placed in the ground. They emerged from the need to cool cities and decrease stormwater runoff.



Figure 2. A typical grid pavement for occasional vehicular traffic

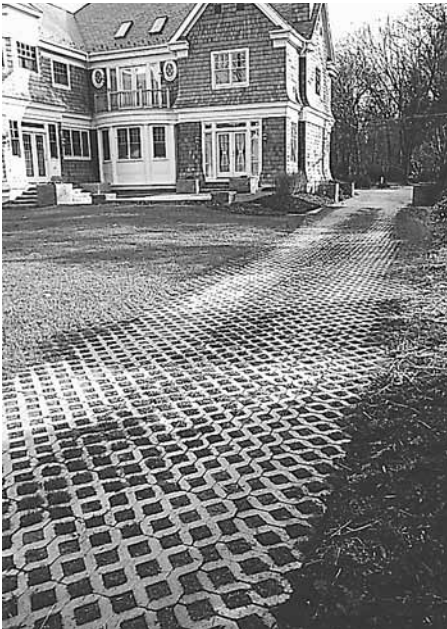


Figure 3. Residential driveway

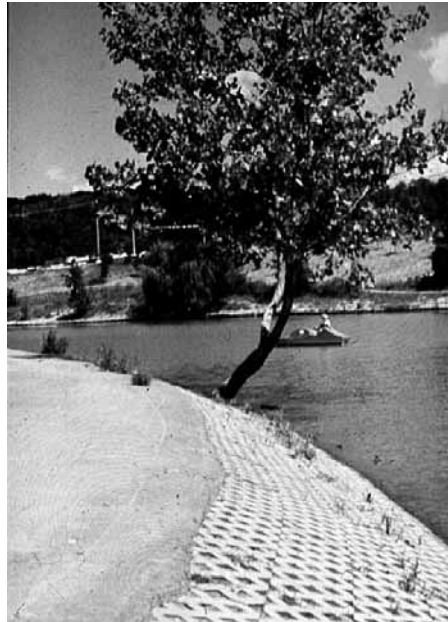


Figure 4. Lakeside stabilization

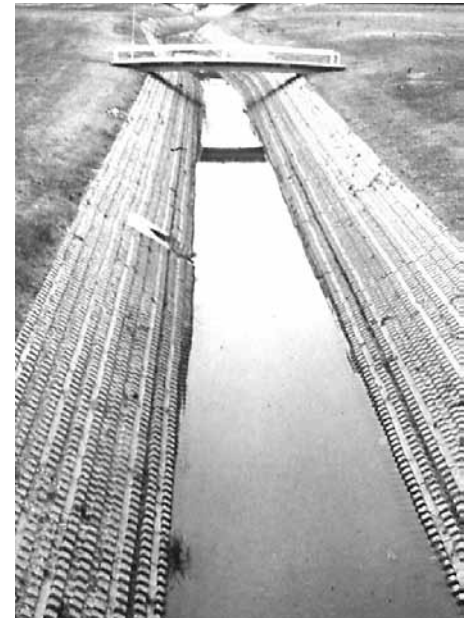


Figure 5. Streambank stabilization



Figure 6. Roadway median crossover



Figure 7. Service access lane

Properties of Concrete Grid Paving Units

The properties of concrete grid units are defined in ASTM C 1319, *Standard Specification for Concrete Grid Paving Units* (3). This specification defines concrete grids as having maximum dimensions of 24 in. long by 24 in. wide (610 mm by 610 mm) and a minimum nominal thickness of 3¹/₈ in. (80 mm). The minimum required thickness of the webs between the openings is 1 in. (25 mm). Dimensional tolerances should not differ from approved samples more than 1/8 in. (3.2 mm) for length, width, and height.

The minimum compressive strength of the concrete grid units should average 5,000 psi (35 MPa) with no individual one less than 4,500 psi (31 Mpa). Their average water absorption should not exceed 10 lb/ft³ (160 kg/m³). Freeze-thaw durability is based on three years of proven field performance of units that conform

to the above web thickness, compressive strength and absorption criteria.

Concrete grid unit designs fall into two categories: lattice and castellated as shown in Figure 14. Lattice pavers have a flat surface that forms a continuous pattern of concrete when installed. Castellated grids include protruding concrete knobs on the surface making the grass appear continuous when installed. Concrete grid pavers range in weight from 45 lbs. (20 kg) to 90 lbs. (40 kg). The open area generally ranges between 20% and 50%.

Design, Construction, and Maintenance Guidelines for Vehicular Pavements

Guidelines are provided for a dense-graded, crushed stone, aggregate base under bedding sand, topsoil and grass or aggregate in the grid openings. The



Figure 8. Emergency access lane for fire trucks



Figure 9. Overflow parking



Figure 11. Fence



Figure 12. Picnic area



Figure 10. Embankment stabilization



Figure 13. Air for tree roots and a warning for drivers

choice of grass or aggregate in the openings depends on the expected intensity of use. Most grasses require at least five hours of sunlight each day to survive. Grass can be placed in the grid openings in intermittent or overflow parking areas, as well as in fire lanes. If a parking area is covered by cars all day for consecutive days, aggregate should be used in the openings as constant shade and engine heat will kill the grass.

Before a parking lot is constructed, existing pedestrian paths across the lot should be studied and defined.

Parking spaces and pedestrian paths as well as spaces for disabled persons can be delineated with solid concrete pavers. Paths with solid units will make walking more comfortable, especially for pedestrians with high-heeled shoes. Likewise, parking spaces accessible to disabled persons and bicycles should be marked with solid pavers (Figure 15).

Design with a dense-graded, crushed stone base — A typical grid pavement installation consists of compacted soil subgrade, a dense-graded base of

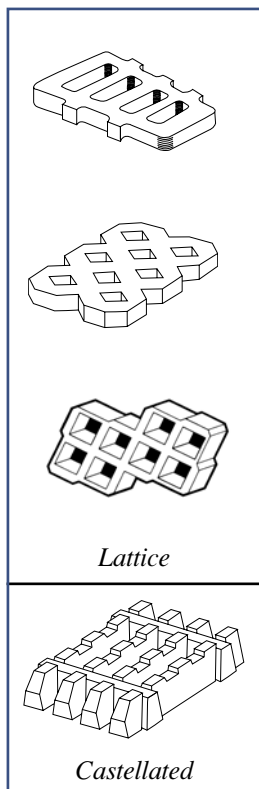


Figure 14. Types of Grid Pavement Units

compacted crushed stone, 1/2 to 1 in. (13 to 25 mm) thick bedding sand, and grids. The openings in the grids are filled with topsoil and grass (Figure 16), or aggregate.

Thicknesses required under conventional asphalt pavements are generally sufficient under concrete grids. A minimum of 8 in. (200 mm) of compacted aggregate base is recommended for emergency fire lanes supporting fire trucks, and truck axle loads, defined by AASHTO H20 and HS20 as well as for parking lots and driveways. Thicker bases may be required when extremely heavy vehicular loads are expected.

Thicker bases may also be required when the soil subgrade is weak (California Bearing Ratio < 4%) or when it has high amounts of clay or silt. Likewise, thicker bases or those stabilized with cement will be required over a high water table, in low-lying areas subject to flooding, or over continually saturated soils. For unstabilized aggregate bases, geotextile is recommended to separate the compacted soil subgrade from the base material for these situations.

Construction of dense-graded bases — Prior to placing a dense-graded base, the soil subgrade should be uniformly compacted to at least 95% of standard Proctor density per ASTM D 698 (4). Dense-graded aggregate bases should be compacted to a minimum of 98% standard Proctor density (4). A well-compacted base is essential to shedding water and remaining stable in freeze-thaw conditions. Specifications for crushed stone aggregate base materials typically used under asphalt pavements are suitable under concrete grid pavements. If no local standards exist, gradation of the base material should conform to ASTM D 2940,

Standard Specification for Graded Aggregate Material for Bases or Subbases for Highways or Airports (5). Figure 17 illustrates a typical cross-section with a dense-graded aggregate base.

For bases over poorly-draining soils, perforated-plastic, geotextile-wrapped drain pipe is recommended for removing excess water. The pipe should be directed to a drainage swale, storm sewer, or stream. If draining soils is impractical, aggregate bases can be stabilized with 4 to 6 percent (by weight) of cement to increase strength during drainage or freeze-thaw.

The maximum surface tolerance of the compacted base should be $\pm 3/8$ in. (± 10 mm) over a 10 ft (3 m) straightedge. The base should extend beyond the perimeter of the grids a minimum of 12 in. (300 mm) when there is no building or curb to restrain them. The extended perimeter increases the stability of the grids and facilitates installation of staked edge restraints.

The gradation of the bedding sand should conform to ASTM C 33 (6) or CSA A23.1-FA1 (7). These gradations are given in the guide specification at the end of this bulletin. Limestone screenings, stone dust or masonry sand should not be used. The thickness of the bedding sand should be between 1/2 and 1 in. (13–25 mm), and screeded to a consistent thickness. If No. 8 stone is used for bedding and openings, this should be screeded to 1 in. (25 mm) thickness. This is typically accomplished with screed rails or bars placed on the compacted base. The bedding sand over the bars is pulled across them with a screed board to establish a consistent sand thickness. The sand should have a consistent moisture content but not be saturated. It should not be disturbed prior to placing the grids.

The grids are placed on the screeded bedding sand with the minimum joint spacing of 3/16 in. (5 mm). The units shouldn't be pushed or hammered such that they touch each other. If the grids touch, they may crack, chip or spall under repeated traffic.

The units should be cut to fill any spaces along the edges prior to compaction. All installed units should be compacted into the bedding sand at the end of each day. Rainfall settles uncompacted sand, preventing the grids from pressing into the sand when compacted. If bedding sand is left uncompacted, it should be covered with plastic to protect it from rain. Otherwise, bedding sand saturated with rainfall prior to compaction will need to dry, be raked and re-screeded or be replaced. If left uncorrected, the grids will settle unevenly and move under traffic.

After the grids are placed, topsoil is spread across them and swept into the openings. Fertilizer may be mixed with the topsoil as well. Quantities should account for the concrete surface.

The grids are vibrated into the sand with a high-frequency (75-90 Hz), low-amplitude plate compactor. It should have a minimum centrifugal compaction force of 4,000 lbs (18 kN). Rollers or a mat should be attached to the plate of the compactor to protect the grids from cracking and chipping. The primary purpose of compaction is to create a level surface among the units. An occasional cracked unit from compaction will not compromise performance. Extensive cracking should be addressed on a job-by-job basis.

The openings should be seeded and completely filled with topsoil. Adding topsoil to the entire surface can assist in germination. Straw can be applied to protect the grass while it is growing. While labor-intensive, sod plugs can be inserted into the openings as an alternative to topsoil and seeding. Sod plugs require a reduced amount of topsoil in the openings so space is

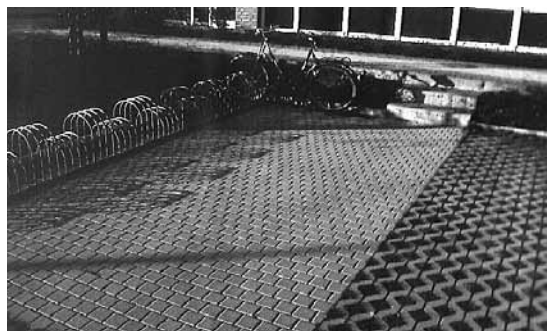


Figure 15. Solid pavers used for bicycle parking and pedestrian access.



Figure 16. A parking lot with a dense-graded, crushed stone base.

available for them.

The choice of grass variety is important to longevity under tires and drought. A limited amount of research on concrete grid pavers has shown that Merion Kentucky bluegrass, Kentucky 31 tall fescue, and Manhattan perennial ryegrass have a high tolerance to wear, a high potential for recuperation from damage, and a low tendency toward thatch build-up (8). Turfgrass specialists may have further recommendations on species and seeding rates.

Sediment from runoff and dust from adjacent areas must be kept from entering the openings during and after establishment of the grass. Sediment clogs the topsoil and prevents grass from growing. The grass should not be exposed to tires until it is well established. A period of time for establishing grass should be part of the construction contract and schedule. This is typically three to four weeks.

Edge restraints are required for containing concrete grid pavements and preventing them from shifting under tire traffic. Concrete, plastic, or metal edge restraints are recommended where automobile tires could loosen and damage the edge units. *ICPI Tech Spec 3 Edge Restraints for Interlocking Concrete Pavements* provides further guidance on their selection (9). For parking applications, tire stops are recommended to help prevent lateral movement of perimeter units. Tire stops should be anchored into the base at least 2 ft. (0.6 m) from the outside edge of the units.

Maintenance — Concrete grids with grass will require maintenance ordinarily required for lawns such as watering, mowing, removal of weeds and occasional fertilizing. If grass in grid pavements can not be maintained by the project owner or tenant, then crushed stone aggregate should be placed in the openings. Aggregate also should be used if sediment from the site or adjacent areas is expected to wash onto the grids or be deposited on them by vehicles.

Snow can be plowed from grids if the plow blade is set slightly above their surface. Rotary brushes for snow removal are not recommended. De-icing salts should never be used on grass because salt will kill it. Re-establishing grass in openings with contaminated soil is difficult without removing and replacing the soil in each opening.

Due to their slab-like shape, concrete grids may crack during compaction or while in service. In most situations, one or two cracks in a unit will not diminish structural or functional performance. If units crack from soil or base settlement, they can be removed and replaced. Likewise, the same units can be reinstated after repairs to the base or to underground utilities.

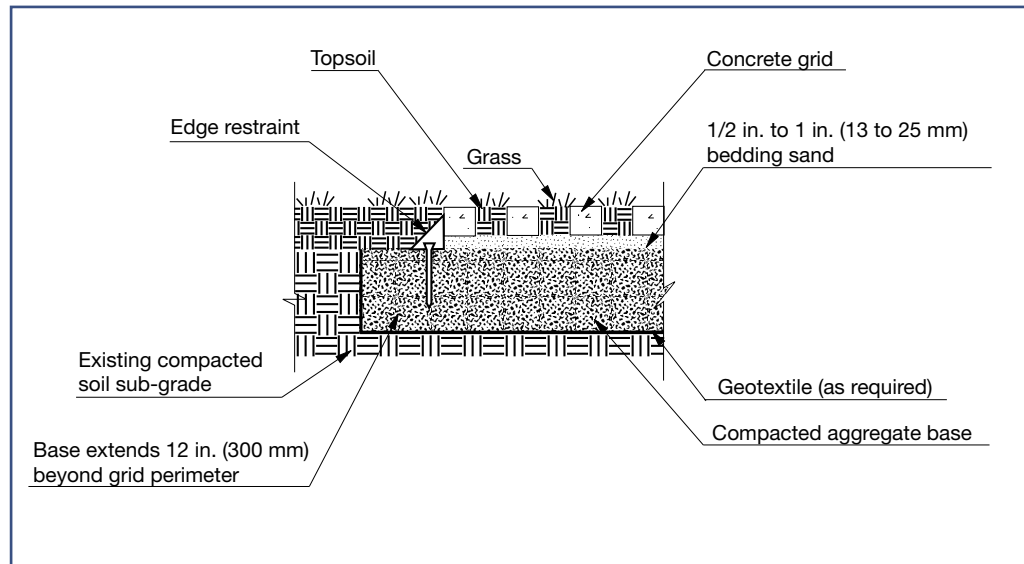


Figure 17. Typical concrete grid pavement over dense-graded base

Design for Runoff and Pollutant Reduction

Concrete grid pavements with an open-graded stone in their openings and bedding can store storm water and allow for partial treatment of pollutants (Figure 18). Grids designed as an infiltration area can improve water quality by reducing sediment and pollutants that enter lakes and streams (10). Because of their hydrologic and pollution abatement benefits, concrete grid pavements are considered by state and federal agencies to be a best management practice (BMP) for reducing stormwater runoff and non-point source pollution. They are one of many techniques that can be used in a system of watershed-wide measures to control excess runoff and nonpoint pollution of storm water. Other techniques can include infiltration trenches, surface or underground retention/detention ponds, roof top/parking lot ponding, street sweeping, filtering systems, permeable interlocking concrete pavement, etc.

Many municipalities regulate the quantity and/or rate of stormwater released into sewers and streams. Others regulate both the water quantity and quality of the runoff by controlling the amount of impervious cover. To control water quantity, municipal regulations strive to meet one or more design objectives. Several municipal stormwater objectives are presented below, with ways that concrete grid pavements contribute to meeting them (11). These objectives benefit water quality since the amount of runoff and pollutants



Figure 18. Concrete grids with aggregate in the openings

in it are decreased.

- *Capture and infiltrate the entire stormwater volume so there is no discharge from the drainage area.* This requires a large area of concrete grid pavement. The high cost of capturing all runoff can be offset by reducing or eliminating pipes, inlets, and other drainage appurtenances.

- *Infiltrate the increased runoff generated by development and impervious surfaces.* This results in runoff volumes equal to or near those prior to development. The runoff volume before and after development are estimated and the difference in volume is stored or infiltrated. Places for storage include gutters, swales, pipes, rooftops, and infiltration areas covered with concrete grid pavements.

- *Infiltrate a fixed volume of runoff from every storm.* This helps control the “first flush” of concentrated pollutants in the initial inch (25 mm) or so of runoff. The first inch (25 mm) of infiltrated water often represents a large percentage of storms. Concrete grid pavements with No. 8 stone bedding and fill in the openings can be designed to infiltrate the first inch (25 mm) or more of runoff.

- *Infiltrate sufficient water to control the peak*

rate of discharge. Many municipalities establish a maximum rate of peak discharge (in cubic feet/second or liters/second) into specific storm sewers or water courses. The maximum rate can be based on the carrying capacity of the drainage ways, or by rates prior to development. This approach favors detention ponds rather than infiltration as a means to control downstream flooding and can help reduce detention storage requirements and costs.

Peak runoff calculations for storm sewers and water courses are typically determined using the Rational Method. For drainage calculations an average runoff coefficient of 0.25 to 0.4 can be used for grids with established grass on a dense-graded aggregate base (12) (13). These coefficients are substantially lower than the 0.9 to 1.00 for conventional pavements. The runoff coefficient of 0.25 to 0.3 is similar to that for natural grassed areas. Runoff coefficients will be 0.2 to 0.25 when No. 8 stone is used to fill the openings and used as bedding over a dense-graded aggregate base. This open-graded aggregate material provides additional runoff storage.

Concrete grids can be placed on a No. 8 bedding layer and open-graded, crushed stone aggregate base such as No. 57 stone. No. 8 stone is placed in the openings. A No. 2 stone subbase under the No. 57 stone can add additional structural support and water storage capacity in its voids. For a detailed design discussion using open-graded aggregate bases for stormwater management, see the ICPI manual, *Permeable Interlocking Concrete Pavements*.

Day et al. (14) reported substantial reductions in nonpoint source runoff pollutants in simulated laboratory experiments with concrete grids with grass over bedding sand, No. 57 open-graded aggregate base, and clay soils. Field studies by Goforth et al. (10) also demonstrated the reduction of pollutants from concrete grid pavement. Likewise, data reported by Claytor and Scheuler (15) illustrate the benefits of infiltration trenches, as well as filtering systems. Some systems are similar to concrete grid pavements.

The type of soil subgrade affects the pollution reduction capabilities of infiltration areas. Clay soils with a high cation exchange capacity will capture more pollutants than sandy soils. Debo and Reese (13) recommend that for control of runoff quality, the storm water should infiltrate through at least 18 in. (0.45 m) of soil (typically clay) which has a minimum cation exchange capacity of 5 milliequivalents per 100 grams of dry soil. Some heavy clay soils that are effective pollutant filters do not have a sufficiently high infiltration rate or bearing capacity when saturated, and may not be suitable under infiltration areas subject to vehicular loads.

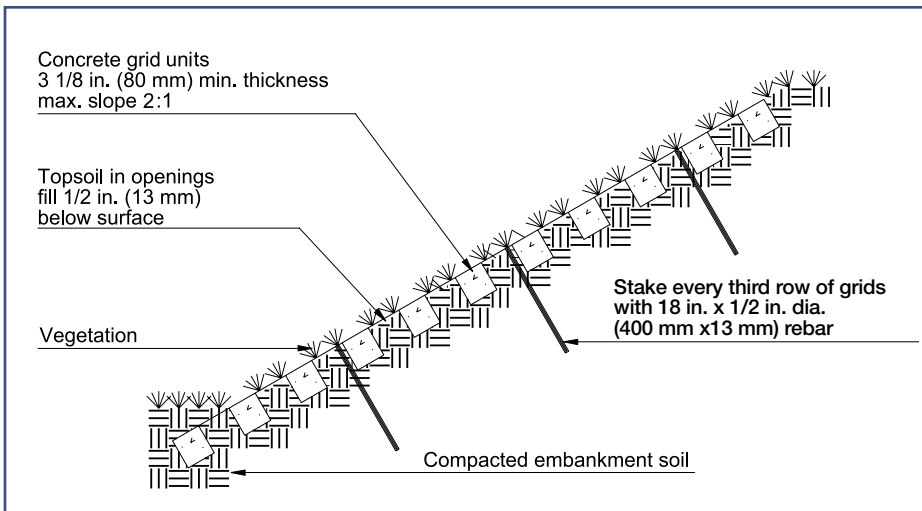


Figure 19. Embankment stabilization with concrete grids

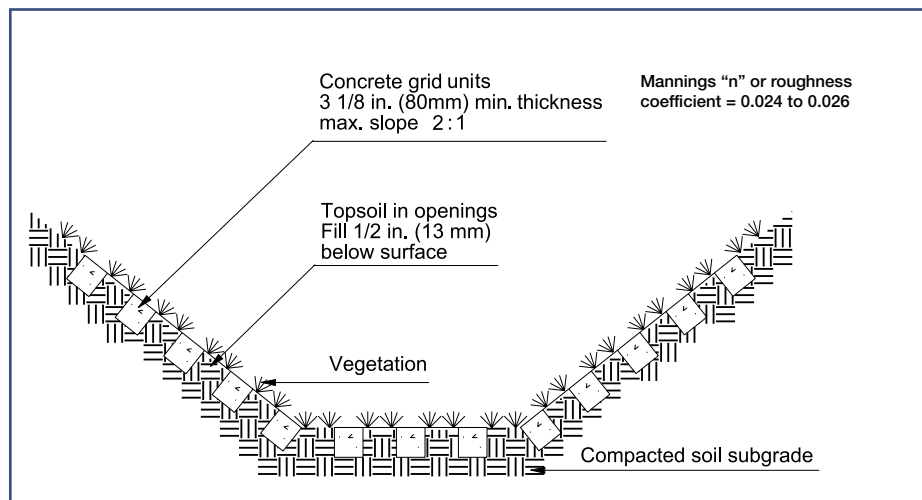


Figure 20. Ditch lined with concrete grid pavers for intermittent flow (17)

Concrete grid pavement is not recommended in places where grease or oil loads are high. Filter areas such as a settling basins should used to remove grease and oil, as well as sediment before they enter concrete grid pavements.

Urban Heat Island Control Through Urban Microclimates

Besides abating runoff pollution, concrete grids generate lower temperatures than asphalt. Solid pavements and buildings hold heat, thereby contributing to the urban heat island and capturing urban air pollution. Research has shown that grid pavements have 2° to 4° F (1° to 2° C) lower local air temperatures than asphalt and 4° to 6° F (2° to 4° C) lower radiometric than asphalt (12). Lower temperatures create more comfortable microclimates for pedestrians in urban surroundings. Concrete grid pavements can be an integral part of cooling the urban climate and reducing air pollution. They can be incorporated with tree-lined streets, a managed urban forest, fountains, roof top gardens, vegetation on building walls, plus park spaces to cool areas and filter urban air pollutants. The result is more comfortable, cleaner and livable cities.

Design Guidelines for Erosion Control

Grid pavements provide immediate stabilization of embankments until grass or other vegetation is established. The recommended maximum angle for stabilization is 27° (2:1). Grids can be placed directly on graded and compacted soil, working from the bottom to the top of the embankment. The grids should be staked every third row to secure them while vegetation establishes. Stakes should be steel (Figure 19). Grids are also effective liners for ditches with intermittent flows of water (Figure 20). The grids protect ditches from erosion while the openings accommodate vegetation to increase stability.

Preparing the lake sides for concrete grids includes grading and compacting the area above the water prior to placing the units. Aggregate is often placed under grids on banks to further prevent erosion. This layer should be at least 4 in. (100 mm) thick. Geotextile should be placed prior to installing the grids and anchored with large aggregate at the “toe” (bottom) and sides of the installation (Figure 21).

Aggregate should be placed in the openings of the submerged grids. Topsoil

and riparian vegetation can be planted along the banks in areas subject to high water levels. Grass can be used in areas not subject to frequent inundation. The maximum recommended slope is 18° (3:1) for grids stabilizing slopes.

Boat ramps in recreation facilities can be made from concrete grids. They can be installed without partitioning the area and removing the water prior to construction. The design guidelines above for lake sides apply except that a minimum of 8 in. (200 mm) of open-graded aggregate should be compacted to provide a base for the grid pavers (Figure 22). This provides a base for the vehicles and boat trailers. The maximum recommended slope is 12% (5:1) for grid boat ramps.

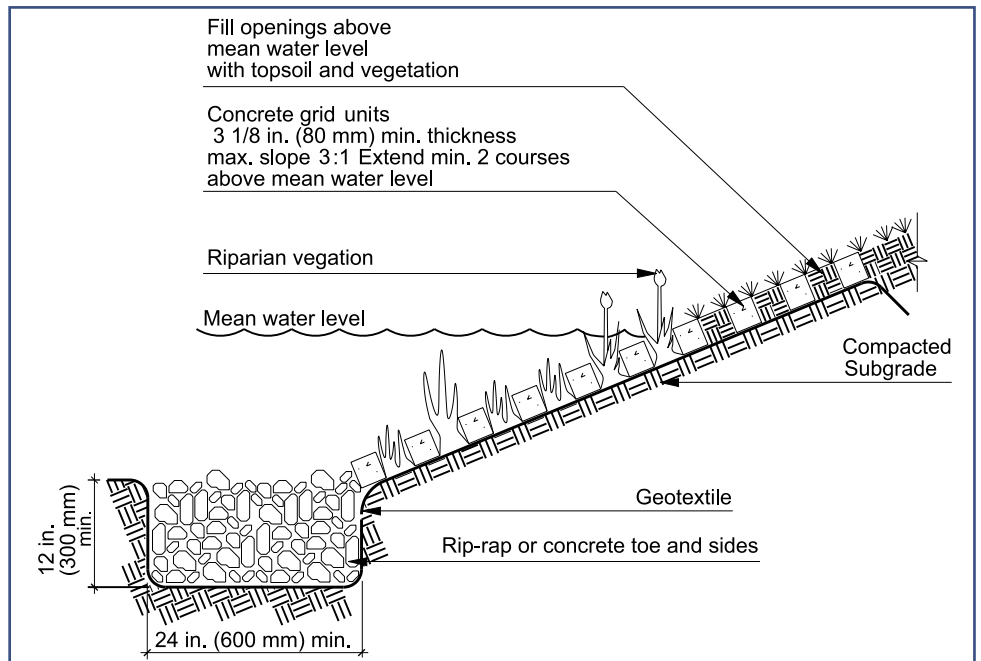


Figure 21. Lake side stabilization with concrete grids

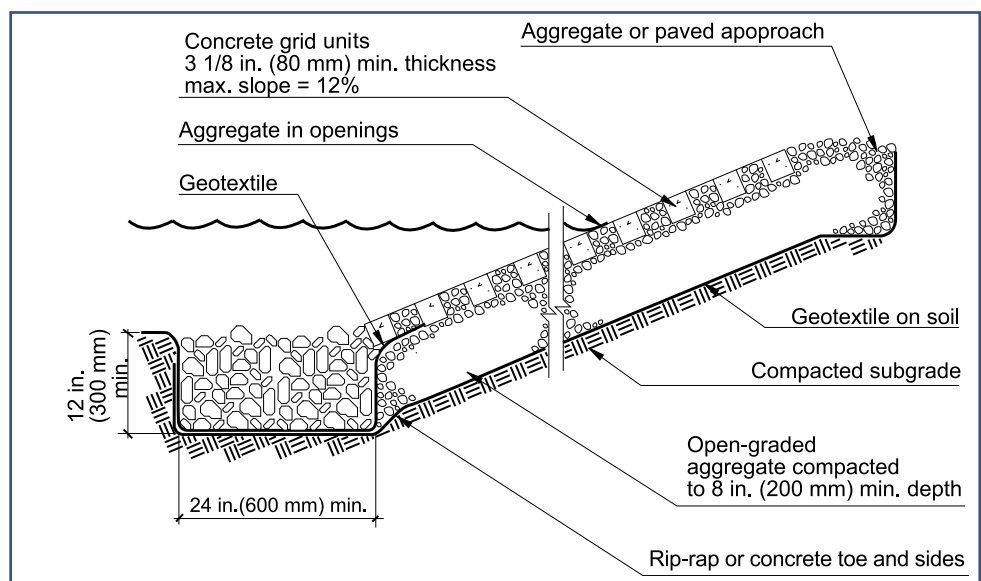


Figure 22. Typical cross-section for boat ramp

References

1. Landsberg, Helmut E., *The Urban Climate*, Academic Press, New York, 1981.
2. *Urban Innovation Abroad*, Vol. 2, Number 12, Council for International Urban Liaison, Washington, D.C., August, 1978.
3. ASTM C 1319-95, Standard Specification for Concrete Grid Paving Units, *Annual Book of ASTM Standards*, Vol. 04.04, American Society for Testing and Materials, Conshohocken, Pennsylvania, 1996.
4. ASTM D 698, Test Method for Laboratory Compaction of Soil Using Standard Effort, *Annual Book of ASTM Standards*, Vol. 04.08, American Society for Testing and Materials, Conshohocken, Pennsylvania, 1993.
5. ASTM D 2940, Standard Specification for Graded Aggregate Material for Bases or Subbases for Highway or Airports, *Annual Book of ASTM Standards*, Vol. 04.03, American Society for Testing and Materials, Conshohocken, Pennsylvania, 1995.
6. ASTM C 33, Standard Specification for Concrete Aggregates, *Annual Book of ASTM Standards*, Vol. 04.02, American Society for Testing and Materials, Conshohocken, Pennsylvania, 1996.
7. CSA A23.1, *Concrete Materials and Methods of Concrete Construction*, Canadian Standards Association, Rexdale, Ontario, 2000.
8. Sherman, R.C., Kinbacher, E.J., and Riordan, T.P. "Turfgrass-Paver Complex for Intensely Trafficked Areas," *Agronomy Journal*, Vol. 72, March-April 1980, pp. 372-374.
9. *Tech Spec 3, Edge Restraints for Interlocking Concrete Pavement*, Interlocking Concrete Pavement Institute, Washington, D.C., 1995.
10. Goforth, G.F., Diniz, E.V., and Rauhut, J.B., *Stormwater Hydrological Characteristics of Porous and Conventional Paving Systems*. Municipal Environmental Research Laboratory, Office of Research and Development, U.S. Environmental Protection Agency, Cincinnati, Ohio, 1983.
11. Ferguson, B.K., *Stormwater Infiltration*, Lewis Publishers, CBC Press, Boca Raton, Florida, 1994.
12. Smith, D.R., "Evaluations of Concrete Pavements in the United States," in *Proceedings of the Second International Conference on Concrete Block Paving*, University of Delft, the Netherlands, April 1984, pp. 330-336.
13. Ferguson, B.K., *Porous Pavements*, CRC Press Boca Raton, Florida, 2005, p. 126.
14. Day, G.E., Smith, D.R., and Bowers, J. *Runoff and Pollution Abatement Characteristics of Concrete Grid Pavements*, Bulletin 135, Virginia Water Resources Research Center, Virginia Polytechnic Institute and State University, Blacksburg, Virginia, October 1981.
15. Claytor R.A. and Schueler T.R., *Design of Stormwater Filtering Systems*, Center for Watershed Protection, Silver Spring, Maryland, December 1996.
16. Ferguson, B. and Debo, T.N., *On-site Stormwater Management*, Second Edition, Van Nostrand Reinhold, New York, 1990.
17. Parsons, Donald A. and Apmann Robert P., "Cellular Concrete Block Pavement," *Journal of the Waterways and Harbors Division*, Proceedings of the American Society of Civil Engineers, Vol. 91, No. WW2, May 1965. ASCE, Reston, Virginia.

SECTION 32 14 13.19 CONCRETE GRID PAVEMENTS

(1995 MasterFormat Section 02795)

Note: This guide specification is for concrete grid units placed on a sand bedding course over a compacted dense-graded aggregate base. The text allows an option of topsoil and grass in the grid openings over bedding sand or No. 8 open-graded aggregate in the grid openings and for the bedding course. This specification is for limited vehicular applications such as access roads and emergency fire lanes, as well as intermittently used overflow parking areas. This text must be edited to suit specific project requirements for projects. This Section includes the term "Architect." Edit this term as necessary to identify the design professional in the General Conditions of the Contract. Use U.S. or Canadian references as appropriate.

If the area is exposed to recurring vehicular traffic and additional stormwater storage in the base is desired, the specifier should consider using permeable interlocking concrete pavements, as they provide additional structural support to vehicles while providing runoff storage in an open-graded, crushed stone base. In such cases, the specifier should refer to the ICPI manual, *Permeable Interlocking Concrete Pavements*.

PART 1 GENERAL

1.01 SUMMARY

A. Section includes:

1. Concrete grid units.
2. Bedding sand.
3. Edge restraints.
4. Geotextiles.
5. [Topsoil and grass for the grid openings.]
6. [Open-graded aggregate for the grid openings.]
7. [Open-graded aggregate bedding course].

B. Related Sections:

1. Section [_____]: Curbs and drains.
2. Section [_____]: Dense-graded aggregate base.
3. Section [_____]: Open-graded aggregate base.

1.02 REFERENCES

A. American Society of Testing Materials (ASTM)

1. C 33, Specification for Concrete Aggregates.
2. C 136, Method for Sieve Analysis for Fine and Coarse Aggregate.
3. C 140, Standard Test Methods of Sampling and Testing Concrete Masonry Units.
4. C 979, Standard Specification for Pigments for Integrally Colored Concrete.

5. C 1319, Standard Specification for Concrete Grid Paving Units.
 6. ASTM D 698, Standard Test Method for Laboratory Compaction Characteristics of Soil Using Standard Effort (12,000 ft-lbf/ft³ (600 kN-m/m³)).
 7. D 2940, Standard Specification for Graded Aggregate Material for Bases or Subbases for Highways or Airports.
 8. D 5268, Specification for Topsoil Used for Landscaping Purposes.
- B. Canadian Standards Association (CSA)
1. CSA A23.1, Concrete Materials and Methods of Concrete Construction
- C. Interlocking Concrete Pavement Institute (ICPI)
1. Tech Spec technical bulletins.

1.03 SUBMITTALS

- A. In accordance with Conditions of the Contract and Division 1 Submittal Procedures Section.
- B. Manufacturer's drawings and details: Indicate perimeter conditions, relationship to adjoining materials and assemblies, expansion and control joints, paving slab [layout,] [patterns,] [color arrangement,] installation [and setting] details.
- C. Sieve analysis per ASTM C 136 for grading of bedding and base materials.

Note: Include D below if the grid openings will be filled with topsoil and grass seed, or sod plugs.

- D. Source and content of topsoil and grass seed [sod].
- E. Concrete grid units:
 1. Color selected by Architect.
 2. [Four] representative full-size samples of each grid type, thickness, color, finish that indicate the extremes of color variation and texture expected in the finished installation.
 3. Accepted samples become the standard of acceptance for the work.
 4. Test results from an independent testing laboratory for compliance of grid paving unit requirements to ASTM C 1319.
 5. Manufacturer's certification of concrete grid units by ICPI as having met applicable ASTM standards.
 6. Manufacturer's catalog literature, installation instructions, and material safety data sheets for the safe handling of the specified materials and products.

1.04 QUALITY ASSURANCE

- A. Paving Subcontractor Qualifications:
 1. Engage an experienced installer who has successfully completed grid pavement installations similar in design, material, and extent indicated for this Project.
 2. Hold a current certificate from the Interlocking Concrete Pavement Institute Concrete Paver Installer Certification program.
- B. Single-source Responsibility: Obtain each color, type, and variety of grids, joint materials and setting materials from single sources with resources to provide products and materials of consistent quality, appearance and physical properties without delaying progress of the Work.
- C. Regulatory requirements and approvals: [Specify applicable licensing, bonding or other requirements of regulatory agencies.]
- D. Mock-up
 1. Locate where directed by the Architect.
 2. Notify Architect in advance of dates when mock-ups will be erected.
 3. Install minimum [100] sf ([10] m²) of concrete grid units.
 4. Use this area to determine the quality of workmanship to be produced in the final unit of Work including surcharge of the bedding sand layer, joint sizes, lines, pavement laying pattern(s), color(s), and texture.
 5. This area shall be used as the standard by which the work is judged.
 6. Subject to acceptance by the owner, mock up may be retained as part of the finished work.
 7. If mock up is not retained, remove and properly dispose of.

1.05 DELIVERY, STORAGE, AND HANDLING

- A. General: Comply with Division 1 Product Requirement Section
- B. Deliver concrete grid units to the site in steel banded, plastic banded, or plastic wrapped packaging capable of transfer by forklift or clamp lift. Unload grids at job site in such a manner that no damage occurs to the product or existing construction.
- C. Cover sand with waterproof covering to prevent exposure to rainfall or removal by wind. Secure the covering in place.
- D. Coordinate delivery and paving schedule to minimize interference with normal use of buildings adjacent to paving.

1.06 ENVIRONMENTAL CONDITIONS

- A. Do not install bedding materials or grid units during heavy rain or snowfall.
- B. Do not install bedding materials and grid units over frozen base materials.
- C. Do not install frozen bedding materials.

1.07 GRID PAVER MAINTENANCE MATERIALS:

- A. Supply [] sf [(m²)] of [each type and color of grid unit] in unopened pallets with contents labeled. Store where directed.
- B. From the same production run as installed materials.

PART 2 PRODUCTS

2.01 CONCRETE GRID UNITS

- A. Manufacturer: [Specify ICPI member manufacturer name.].
 - 1. Contact: [Specify ICPI member manufacturer contact information.].
- B. Concrete grid paver units, including the following:
 - 1. Grid unit type: [Specify name of product group, castellated, lattice, etc.].
 - a. [Material standard: Comply with material standards set forth in [ASTM C 1319.].
 - b. Color [and finish]: [Specify color.] [Specify finish].
 - c. Color Pigment Material Standard: Comply with ASTM C 979.
 - d. Size: [Specify.] inches [(Specify.) mm] x [Specify.] inches [(Specify.) mm] x [Specify.] inches [(Specify.) mm] thick.
- C. Manufactured in a plant where paving products are certified by ICPI as having passed ASTM requirements in this specification.

2.03 PRODUCT SUBSTITUTIONS

- A. Substitutions: No substitutions permitted.

2.03 BEDDING MATERIALS

Note: If openings are filled with topsoil, use sand bedding. If the openings are filled with open-graded aggregate for additional runoff storage, the same aggregate should be used for the bedding. Edit 2.03 and 2.04 accordingly.

- A. General – Sieved per ASTM C 136.
- B. Bedding Sand

Note: The type of sand used for bedding is often called concrete sand. Sands vary regionally. Contact contractors local to the project and confirm sand(s) successfully used in previous similar applications. Bedding sand is not used in ditch liner applications, slope protection, riparian stabilization or with boat ramps constructed with concrete grid units.

- 1. Washed, clean, hard, durable crushed gravel or stone, free from shale, clay, friable materials, organic matter, frozen lumps, and other deleterious substances.
- 2. Conforming to the grading requirements in Table 1 below.
- 3. Do not use limestone screenings.

Table 1

Grading Requirements for Bedding Sand

ASTM C33 or CSA A23.1-FA1

Sieve Size	Percent Passing	Sieve Size	Percent Passing
3/8 in. (9.5 mm)	100	10 mm	100
No. 4 (4.75 mm)	95 to 100	5 mm	95 to 100
No. 8 (2.36 mm)	85 to 100	2.5 mm	80 to 100
No. 16 (1.18 mm)	50 to 85	1.25 mm	50 to 90
No. 30 (0.600 mm)	25 to 60	0.63 mm	25 to 65
No. 50 (0.150 mm)	0 to 30	0.315 mm	10 to 35
No. 100 (0.150 mm)	2 to 10	0.160 mm	2 to 10

-OR-

- B. Washed, open-graded stone.

Note: Finer gradations such as ASTM No. 89 stone may be used.

- 1. Conforming to the grading requirements in Table 2 below.

Table 2

ASTM No. 8

Gradation for Fill or Bedding Course

Sieve Size	Percent Passing
1/2 in. (12.5 mm)	100
3/8 in. (9.5 mm)	85 to 100
No. 4 (4.75 mm)	10 to 30
No. 8 (2.36 mm)	0 to 10
No. 16 (1.18 mm)	0 to 5

2.04 FILL MATERIALS FOR GRID OPENINGS

A. Topsoil: Conform to ASTM D 5268.

Note: Consult with local turf grass specialists for recommendations on grass seed mixture or sod materials.

B. Grass seed [Sod]: [mixture and source].

-OR-

A. Open-graded aggregate.

B. Conforming the gradation requirements in Table 2. Do not use gravel.

Note: Local, state or provincial standards for aggregate base materials for roads should be used for the gradation and quality of dense-graded aggregate base materials under concrete grid pavements. If no standards exist, follow ASTM D 2940, *Standard Specification for Graded Aggregate Material for Bases or Subbases for Highways or Airports*. The gradation for base material from this standard is given in Table 3 below. This material should be compacted to a minimum of 95% standard Proctor density.

Table 3
ASTM D 2940
Gradation for Dense-Graded, Crushed Stone Base

Sieve Size	Percent Passing
2 in. (50 mm)	100
1 1/2 in. (37.5 mm)	95 to 100
3/4 in. (19.0 mm)	70 to 92
3/8 in. (9.5 mm)	50 to 70
No. 4 (4.75 mm)	35 to 55
No. 30 (0.600 mm)	12 to 25
No. 200 (0.075 mm)	0 to 8

2.04 EDGE RESTRAINTS

A. Provide edge restraints installed around the perimeter of all concrete grid paving unit areas as follows:

1. Manufacturer: [Specify manufacturer].
2. Material: [Plastic] [Concrete] [Aluminum] [Steel] [Precast concrete] [Cut stone].
3. Material standard: [Specify material standard].

2.05 ACCESSORIES

A. Provide accessory materials as follows:

1. Geotextile fabric:
 - a. Material Type and Description: [Specify material type and description].
 - b. Material Standard: [Specify material standard].
 - c. Manufacturer: [Acceptable to concrete grid unit manufacturer] [Specify manufacturer].

PART 3 EXECUTION

3.01 ACCEPTABLE INSTALLERS

A. [Specify acceptable paving subcontractors].

3.02 EXAMINATION

Note: Compaction of the soil subgrade is recommended to a minimum of 95% standard Proctor density per ASTM D 698 for pedestrian and lightly trafficked vehicular areas. Stabilization of the subgrade and/or base material may be necessary with weak or saturated subgrade soils.

Note: Local aggregate base materials typical to those used for highway flexible pavements are recommended, or those conforming to ASTM D 2940. Compaction of aggregate is recommended to not less than 95% Proctor density in accordance with ASTM D 698 is recommended for pedestrian and vehicular areas. Mechanical tampers are recommended for compaction of soil subgrade and aggregate base in areas not accessible to large compaction equipment. Such areas can include that around lamp standards, utility structures, building edges, curbs, tree wells and other protrusions. The recommended base surface tolerance should be $\pm 3/8$ in. (± 10 mm) over a 10 ft. (3 m) straight edge.

Note: The elevations and surface tolerance of the aggregate base determine the final surface elevations of concrete grids. The installation contractor cannot correct deficiencies in the base surface with additional bedding materials. Therefore, the surface elevations of the base should be checked and accepted by the General Contractor or designated party, with written certification to the paving subcontractor prior to placing bedding materials and concrete grids.

A. Acceptance of site verification conditions:

1. Contractor shall inspect, accept and verify in writing to the grid installation subcontractor that site conditions meet specifications for the following items prior to installation of bedding materials and concrete grid units:
 - a. Verify that drainage and subgrade preparation, compacted density and elevations conform to specified requirements.
 - b. Verify that geotextiles, if applicable, have been placed according to drawing and specifications.
 - c. Verify that base materials, thickness, [compacted density,] surface tolerances and elevations conform to specified requirements.
 - d. Provide written density test results for the soil subgrade, base materials to the Owner, Contractor, and grid installation subcontractor.
2. Do not proceed with installation of bedding materials and concrete grids until [subgrade soil and] base conditions are corrected by the Contractor or designated subcontractor.

3.03 PREPARATION

- A. Verify that base is dry, certified by Contractor as meeting material, installation and grade specifications [and geotextile] are ready to support sand, [edge restraints,] grids and imposed loads.
- B. Edge Restraint Preparation:
1. Install edge restraints per the drawings [and manufacturer's recommendations] [at the indicated elevations].
 2. Mount directly to finished base. Do not install on bedding sand.
 3. The minimum distance from the outside edge of the base to the spikes shall be equal to the thickness of the base.

3.04 INSTALLATION

- A. Spread the sand [No. 8 stone] evenly over the compacted, dense-graded base course and screed uniformly to ½ to 1 in. (13 to 25 mm). Place sufficient sand [stone] to stay ahead of the laid grids.
- B. Ensure the grid units are free from foreign materials before installation.
- C. Lay the grid units on the bedding sand in the pattern(s) shown on the drawings. Maintain straight joint lines.
- D. Joints between the grids shall not exceed [3/16 in. (5 mm)].
- E. Fill gaps at the edges of the paved area with cut grid pavers or edge units.
- F. Cut grid pavers to be placed along the edge with a double-bladed splitter or masonry saw.
- G. Sweep [top soil][No. 8 aggregate] into the joints and openings until full.
- H. Sweep the grid surface clear prior to compacting.
- I. Compact and seat the grids into the screeded [bedding sand] [No. 8 aggregate] using a low-amplitude, 75-90 Hz plate compactor capable of at least 4,000 lbs. (18 kN) centrifugal compaction force. Use rollers or a rubber or neoprene pad between the compactor and grids to prevent cracking or chipping. Do not compact within 6 ft (2 m) of the unrestrained edges of the grid units.
- J. All work to within 6 ft (2 m) of the laying face must be left fully compacted at the completion of each day.
- K. [Broadcast grass seed at the rate recommended by seed source.][Place sod plugs into openings.][Add topsoil to the surface to cover the seeds.]
- L. Remove excess [topsoil][No. 8 aggregate] on surface when the job is complete.
- M. [Distribute straw covering to protect germinating grass seed [sod]. Water entire area. Do not traffic pavement for [30] days.] if seeded.

3.05 FIELD QUALITY CONTROL

- A. After removal of excess top soil/aggregate, check final elevations for conformance to the drawings. Allow ⅛ to ¼ in. (3 to 6 mm) above specified surface elevations to compensate for minor settlement.
- B. The final surface tolerance from grade elevations shall not deviate more than $\pm 3/8$ in. (10 mm) over a 10 ft (3 m) straightedge.
- C. The surface elevation of grid units shall be ⅛ to ¼ in. (3 to 6 mm) above adjacent drainage inlets, concrete collars or channels.
- D. Lippage: No greater than ⅛ in. (3 mm) difference in height between adjacent grid units.

3.06 PROTECTION

- A. After work in the section is complete, the Contractor shall be responsible for protecting work from damage due to subsequent construction activity on the site.

END OF SECTION

Interlocking Concrete Pavement Institute
13921 Park Center Road, Suite 270
Herndon, VA 20171
Tel: (703) 657-6900
Fax: (703) 657-6901

Canada:

P.O. Box 41545
230 Sandalwood Parkway
Brampton, ON L6Z 4R12

E-mail: ICPI@icpi.org
Web site: www.icpi.org



WARNING: The content of ICPI Tech Spec technical bulletins is intended for use only as a guideline. It is NOT intended for use or reliance upon as an industry standard, certification or as a specification. ICPI makes no promises, representations or warranties of any kind, express or implied, as to the content of the Tech Spec Technical Bulletins and disclaims any liability for damages resulting from the use of Tech Spec Technical Bulletins. Professional assistance should be sought with respect to the design, specifications and construction of each project.